

Part Number:
1720005 and KXA00125

Models:
With VIN starting ME3J3A5FAL3

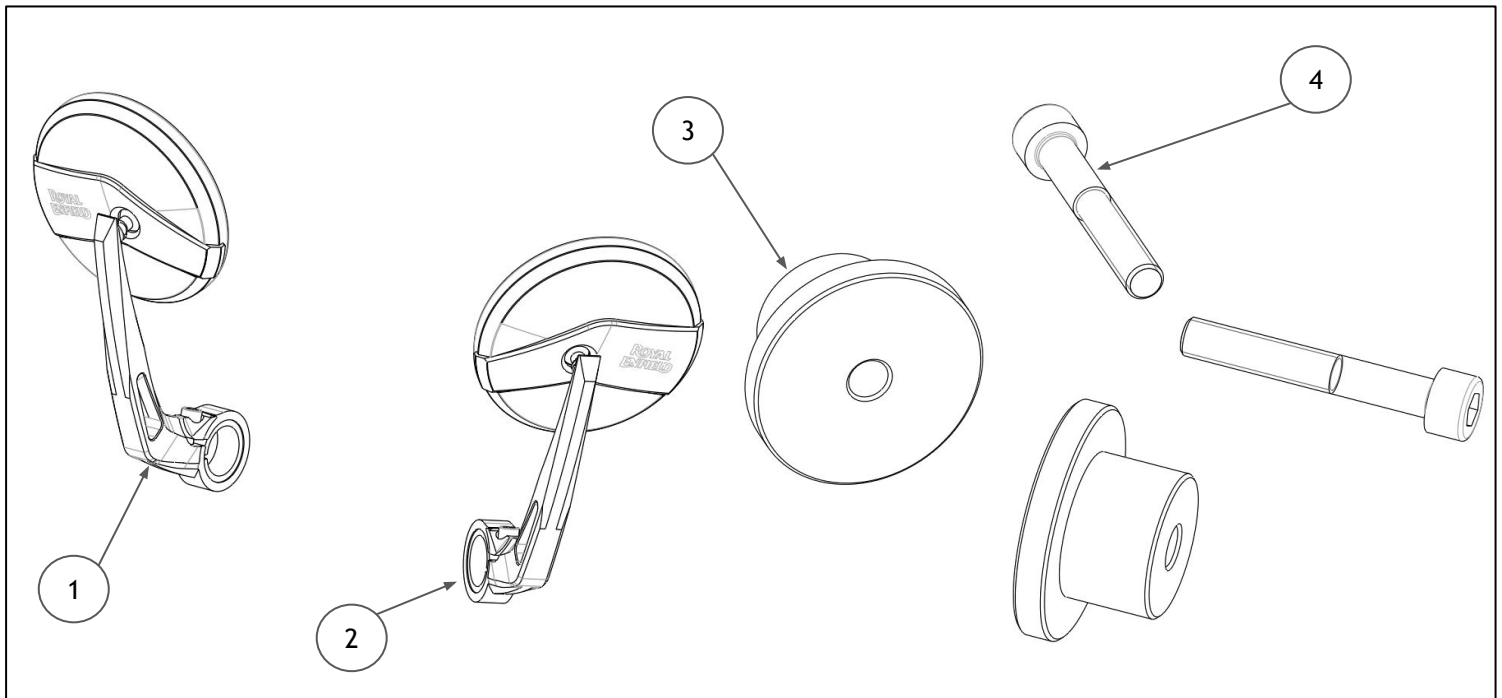
WARNING: Royal Enfield genuine accessories are designed to fit only the specific Royal Enfield motorcycle(s) that are specified above. They should not be fitted to any other type of motorcycle. Pay particular attention to the warnings and cautions contained in this instruction, failure to do so may result in an incorrect installation of the accessory which could result in an unsafe riding condition and possible accident. If in any doubt always seek help from your authorised Royal Enfield dealer.

WARNING: Before starting any accessory kit installation ensure the motorcycle is supported in a stable condition. Failure to support the motorcycle correctly could lead to motorcycle damage or personal injury.

WARNING: All fixings must be tightened to the torque values specified in this instruction. Failure to tighten fixings to the correct torque could result in an unsafe riding condition and possible accident.

CAUTION: Care should be taken when fitting any accessory kit. Incorrect handling of kit components or the use of incorrect tools could lead to component or motorcycle damage.

NOTE: The content of this instruction is subject to change at any time without notice or liability. Royal Enfield reserves the right to revise the information presented at any time.



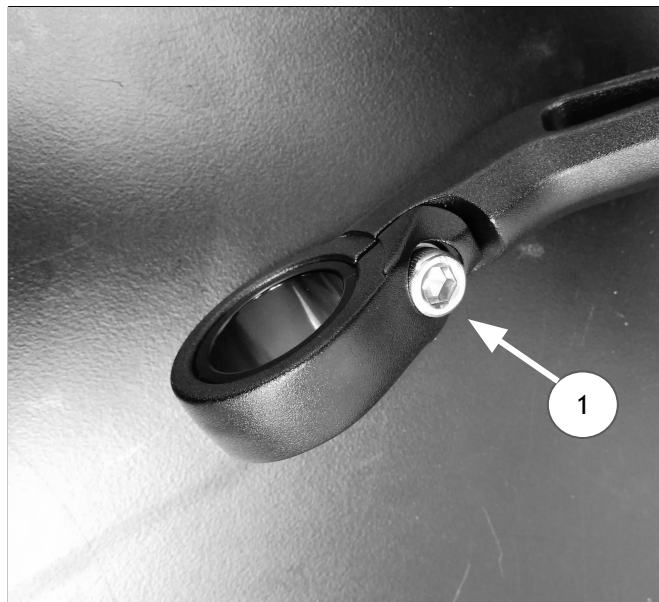
1720005 - Bar End Mirror		
Item	Description	Qty
1	Bar End Mirror, RH	1
2	Bar End Mirror, LH	1

KXA00125 - Bar End Mirror Mounting Kit		
Item	Description	Qty
3	Bar End Mirror Mounting Spacer	2
4	Bolt, CAP, M6 X 40mm	2

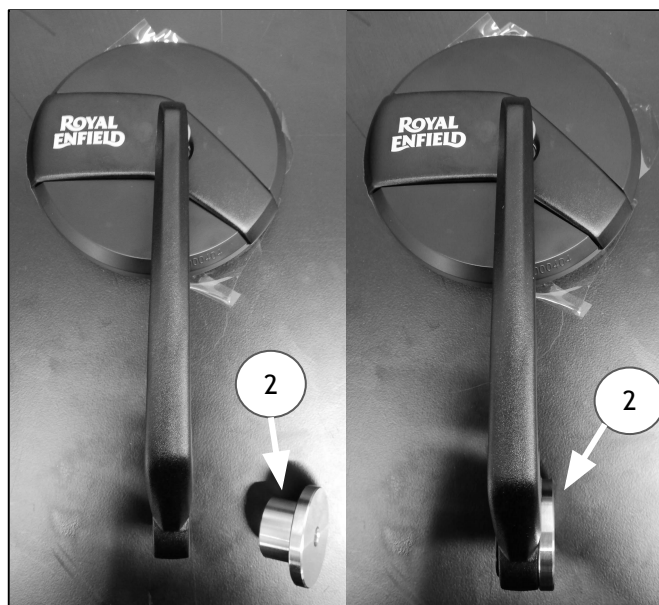
1 Loosen the CAP Head Bolt (1) in the Bar End Mirror.



5mm hex bit with ratchet



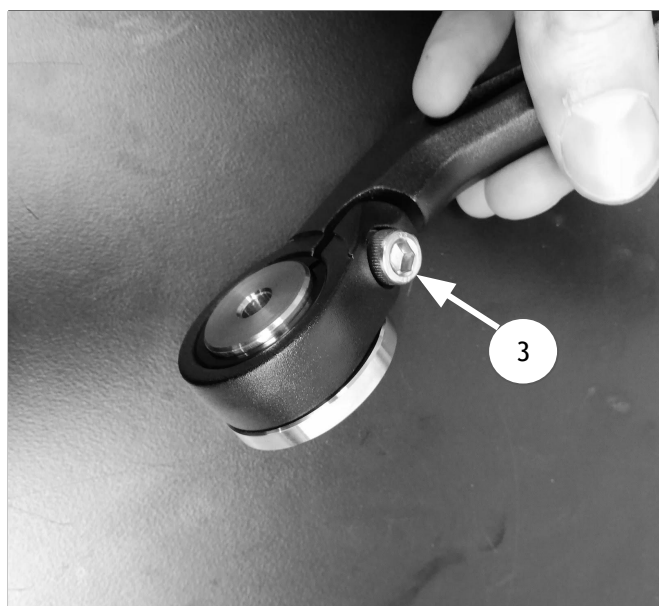
2 Push fit Bar End Mount Spacer (2) into the Bar End Mirror with the large face positioned away from the logo.




3 Tighten the CAP Head Bolt (3) to **8NM**.

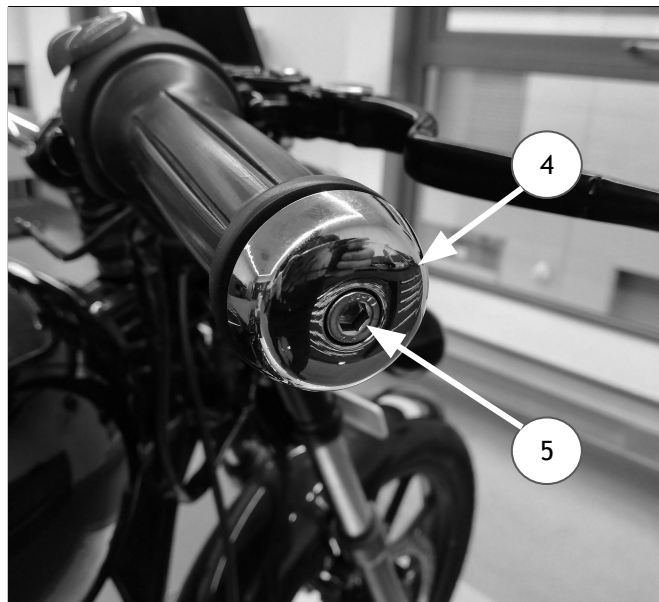


5mm hex bit with ratchet




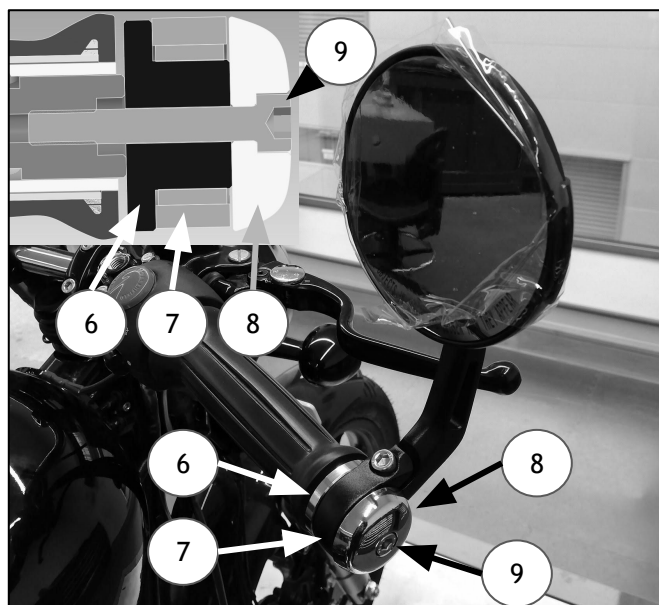
4 Support the Bar End Weight (4) and remove the CAP Head Bolt (5). Discard the fixing and retain the Bar End Weight for reuse.

	5mm hex bit with ratchet
--	--------------------------



5 Hold the Bar End Mirror (7) to the end of the handlebar with the large spacer surface (6) in contact with the handlebar, place the bar end weight (8) on the other side of the spacer and insert the Bolt, CAP, M6 x 40mm (9). Set the mirror angle and torque to 10NM.

	5mm hex bit with ratchet
--	--------------------------



6 Repeat steps 1-5 for the other hand mirror, remove protective film from mirrors and adjust viewing angles as required.



WARNING: After fitting any genuine Royal Enfield accessory always ride the motorcycle with caution and allow time to become familiar with any change in the motorcycle handling characteristics. Failure to become familiar with any change in the motorcycle handling characteristics may cause the motorcycle to become unstable and result in an accident.