



SPARES FOR ROYAL ENFIELD AND AMAL

EMAIL: [info@hitchcocksmotorcycles.com](mailto:info@hitchcocksmotorcycles.com)

WEB: [www.hitchcocksmotorcycles.com](http://www.hitchcocksmotorcycles.com)

**HITCHCOCK'S MOTORCYCLES LTD**  
**ROSEMARY COURT**  
**OLDWICH LANE WEST**  
**CHADWICK END**  
**SOLIHULL**  
**B93 0EY          ENGLAND**

**TELEPHONE:          01564 783 192**

**FAX:                  01564 783 313**

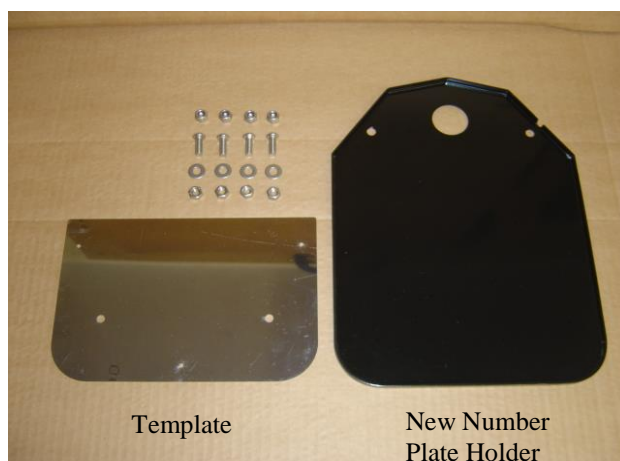
## Fixing Instructions for: Rear Number Plate Holder to allow fitting of alternative tail lamps - P/No.92682 for C5 and B5 Models

These are the items you will have received in your kit:

- 1 Rear Number Plate Holder
- 1 Drilling Template
- 4 x 6mm Flat Washer Stainless
- 4 x 6mm Nut Stainless
- 4 x Nut Nyloc Stainless
- 4 x M6 15mm Stainless Button Head Socket Screw

You will require the following tools:

- 10mm Spanner
- 7 mm Drill for Metal
- 4mm Allen Key
- Screwdriver



### Instructions:

Unscrew the original number plate holder, discard the bolts whilst retaining the number plate fixings, and then remove the bulb housing.

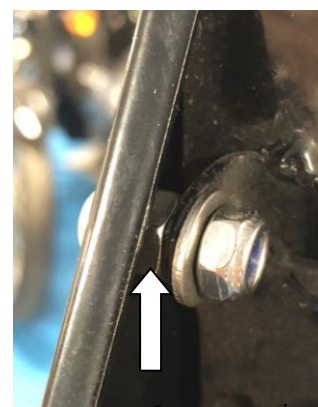
The drilling template has 5 holes in it. The top 2 holes are for marking the optimum position of the registration plate itself, the 3 other holes are for attaching the new plate holder to your existing bracket/holder that remains on the bike. Depending on your exact year and model, you will need to drill either 1 or 2 of these extra holes. Take the template and position it on the bottom rear of the new number plate holder (the side with the lip), mark and drill the required holes using a 7mm drill piece.

Depending on the type of rear light you will be fitting, now is the time to position this in the correct place on the new number plate holder and drill the required holes and fit the light as necessary.

You can now secure the new number plate holder, passing the button head socket screw(s) through the face of the plate, and using the flat nut as a spacer if required, by tightening it directly on the back of the new number plate holder plate, (see note below). Finish by securing to the existing number plate holder with the washer and nyloc nut.

**NOTE:** The flat nut should be fitted on the back of the new plate holder as and when required, this acts as a spacer to ensure that the plate lip does not distort when you tighten all of the required bolts up. On some models the plate will be sitting flush and will not require this additional nut.

Re-use the original registration plate screws to attach the registration plate to the black plate holder using the holes that you have pre-drilled with the template.



6mm nut acting as a spacer