



SPARES for ROYAL ENFIELD & AMAL

HITCHCOCK'S MOTORCYCLES LTD
OLDWICH LANE WEST
CHADWICK END
SOLIHULL
B93 OEY ENGLAND

E-MAIL info@hitchcocksmotorcycles.com

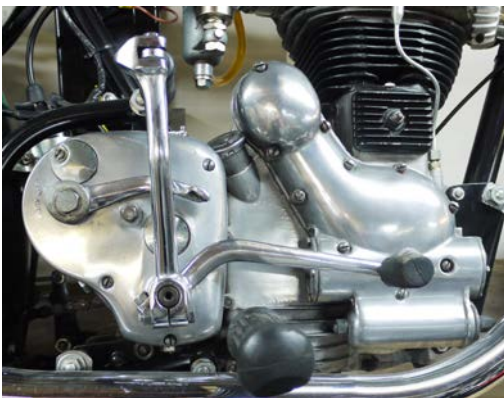
TELEPHONE 01564 783 192

www.hitchcocksmotorcycles.com

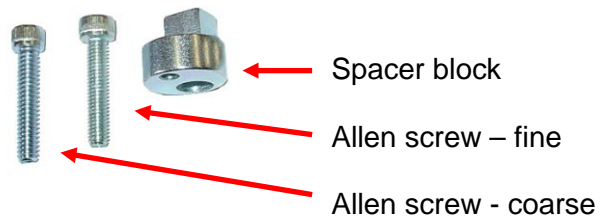
FAX 01564 783 313

90221 Gearbox Outer Cover Stiffener Assembly (Last amended 18 July 2013)

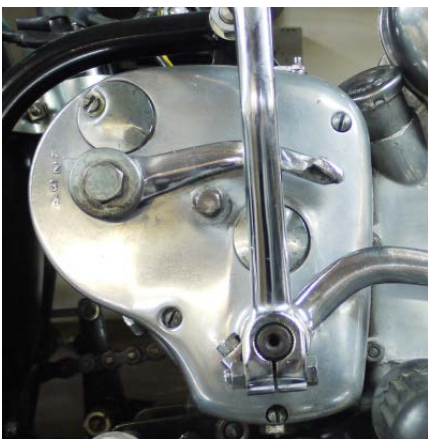
Background



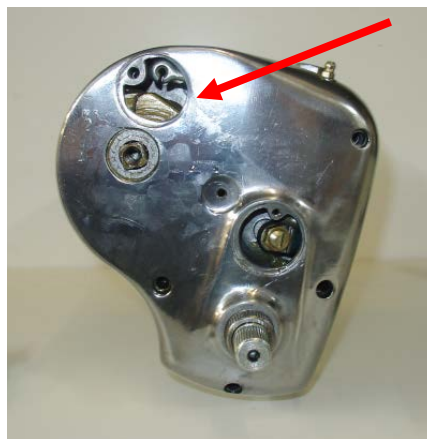
The gearbox outer cover on modern Bullets is prone to flexing when the clutch lever is pulled in, resulting in the loss of clutch lift. The small support kit will help alleviate this flexing by supporting the outer cover from the inside.



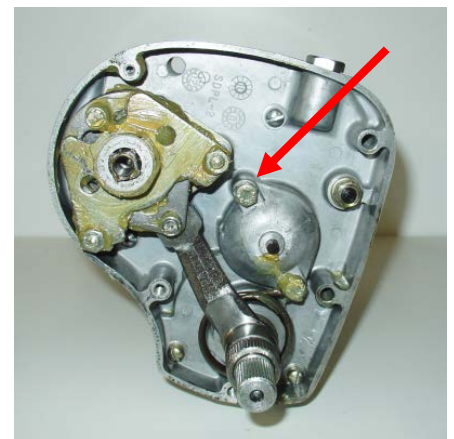
Preparation



1. Remove both inspection covers, neutral lever, eccentric bush bolt, gear lever, kickstart lever and four cover retaining screws . . .



2. Disengage clutch cable (arrowed). The outer cover should then easily slide off the gear lever shaft . . .

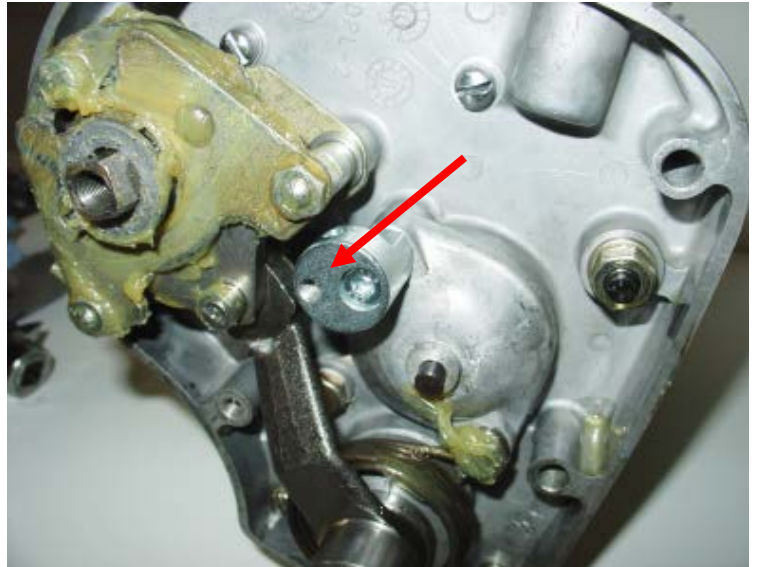


3. . . so that it looks like this. Remove the bolt (arrowed).

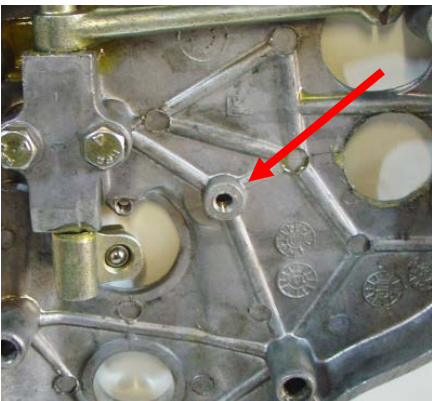
Installing the Stiffener Assembly



4. Screw the stiffener block into the vacant hole, using the Allen head screw with the coarse thread . . .



5 . . . until it is roughly in this position (note position of threaded hole). You need to line up the central hole in the outer case with the threaded hole (arrowed). Push the cover back on and looking through the central hole, you should just be able to see the vacant hole in the stiffener block. Adjust the block until the holes line up, then tighten the block securing screw.



6. The gearbox cover central mounting hole needs to be enlarged, to enable the fine threaded Allen screw to pass through (arrowed). You will require a 7mm drill bit for this.



7. When you refit the gearbox cover and depending on the model/year of your bike, you may need to carefully remove a small amount from the top of the central mounting hole casting, until the cover fits flush.



8. Once the cover is back on, the fine thread Allen head screw from the stiffener assembly kit passes through the original eccentric spacer for the neutral selector adjuster. Re-adjust as required.

. . . and hopefully, job done!